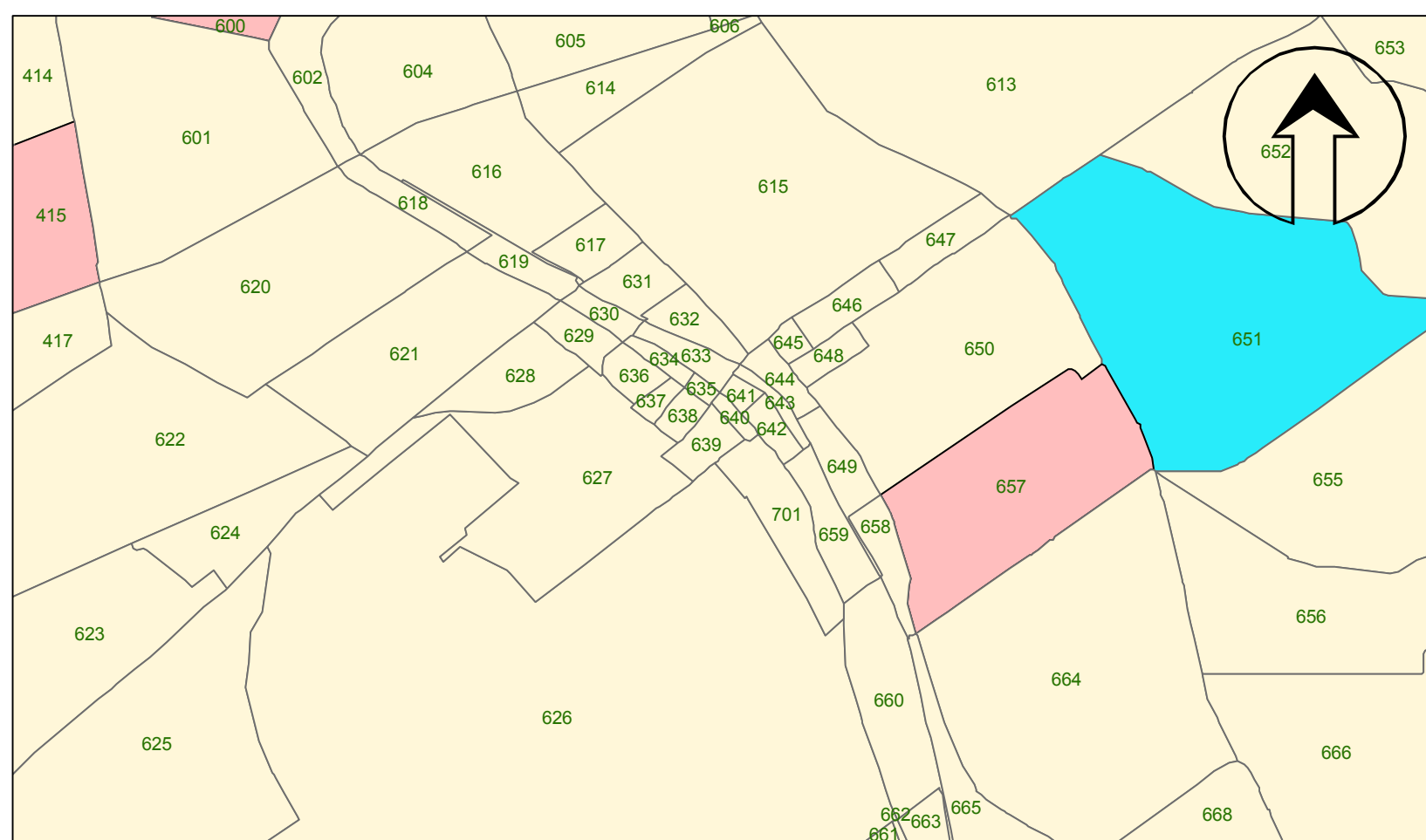
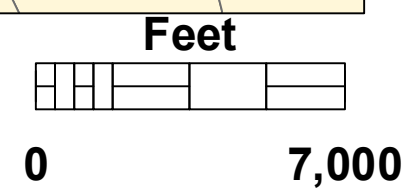
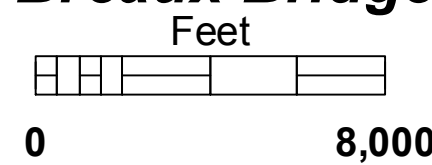


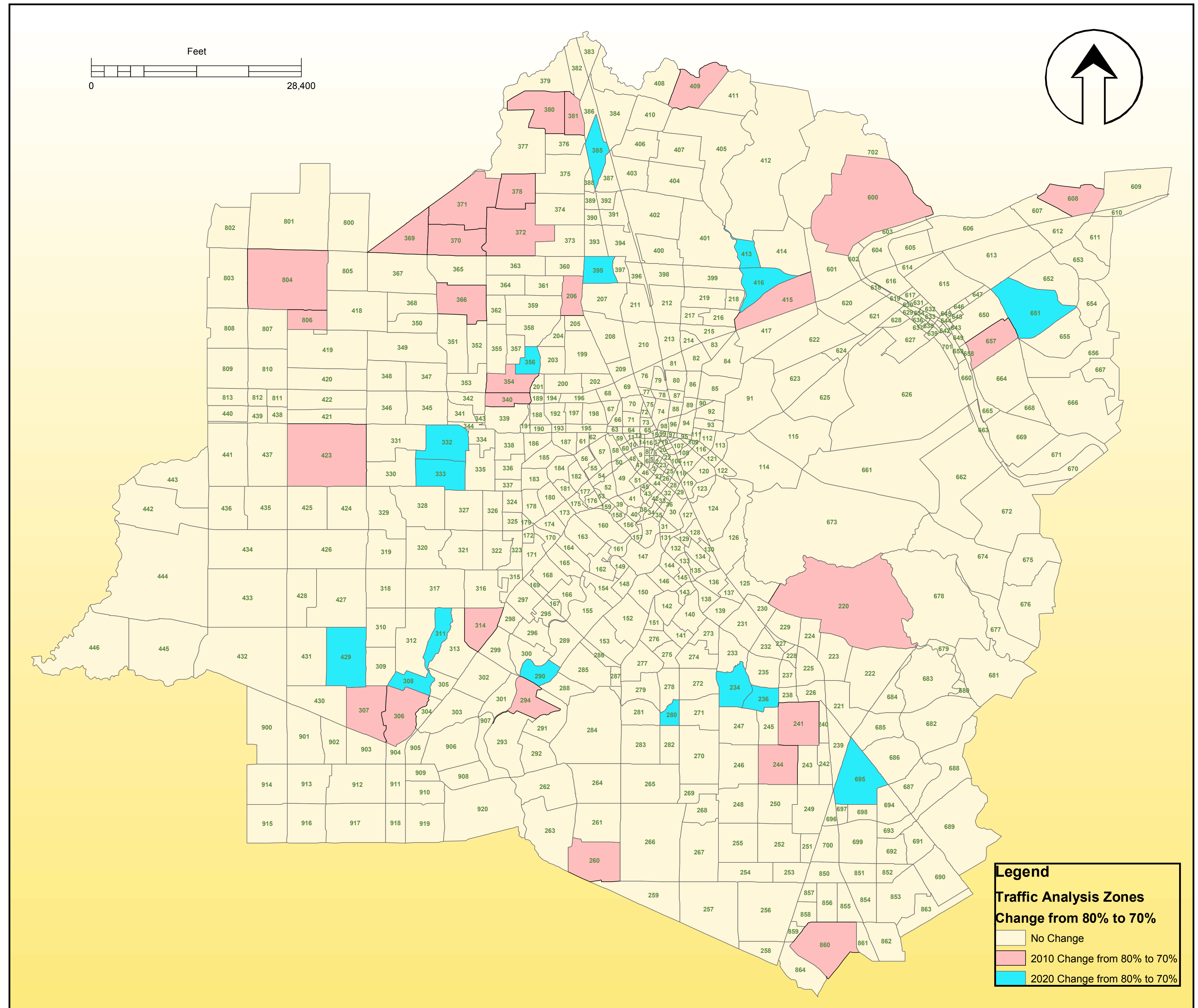
Central Lafayette Vicinity



Breaux Bridge Vicinity



The sources of data and graphic elements used in this map are derived from local, state and/or federal public records and from consultants under contract with Lafayette Consolidated Government. The map is intended solely to estimate and to plan local transportation services by government professionals. Other uses of the map are the responsibility of the map reader.



Legend

Traffic Analysis Zones

Change from 80% to 70%

- No Change
- 2010 Change from 80% to 70%
- 2020 Change from 80% to 70%

Lafayette Consolidated Government
 Traffic and Transportation Department
 Metropolitan Planning Organization
 Comprehensive Planning Division
 Traffic Analysis Zones (TAZ's)
 2030 Transportation Plan



2010 and 2020
 Traffic Analysis Zones
 Land Availability Change
 from 70% to 80%

Sheet No.

8-4

Project No. 26210-014-17-01-03-01

Dwg: MJL, Dr. DJ; Plan: Dr. DJ

eFile: 8-4_land_Grow_new_2.MXD

Date: August 2, 2005